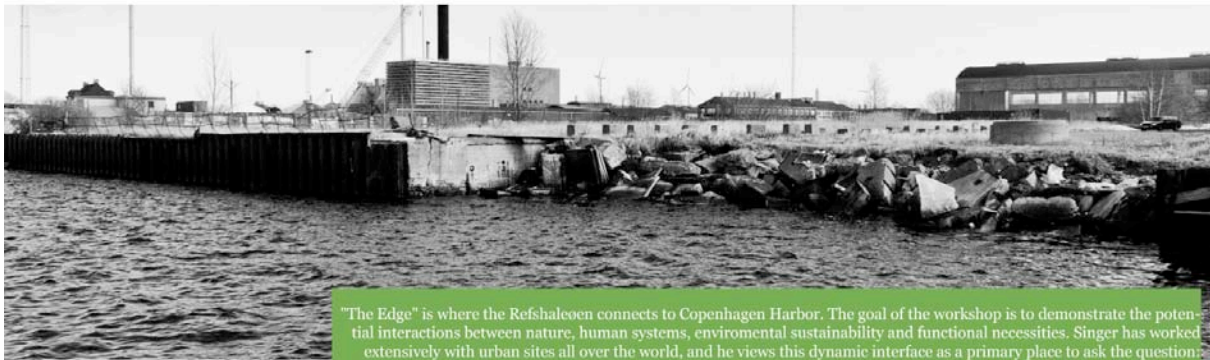


The Edge - A waterfront -project at Refshale Island – Copenhagen

proposed by Michael Singer Studio - USA

During the week of March 20-24 2012 the famous and innovative artist and designer Michael Singer and his studio colleague Jason Bregman, environmental planner brought their creative forces and their technical experience to a harbor front area at Refshale Island, near Copenhagen. Michael Singer was invited to lead a workshop addressing a particular site, which was called *The Edge*, because it is placed between the water and the land. The workshop was organized by the artist Joachim Hamou for a project called *LAND* dealing with different aspects of agriculture. The Yard Gallery, led by Anette Holmberg, hosted the workshop.

THE EDGE / MICHAEL SINGER OPEN WORKSHOP 20TH-25TH OF MARCH



"The Edge" is where the Refshaleen connects to Copenhagen Harbor. The goal of the workshop is to demonstrate the potential interactions between nature, human systems, environmental sustainability and functional necessities. Singer has worked extensively with urban sites all over the world, and he views this dynamic interface as a primary place to ask the question: *How can we live with what sustains us?*

YARD THE SHIPYARD GALLERY CPH

PROGRAM AT YARD GALLERY / FREE AND OPEN TO ALL !!

Tuesday 20th of March

12.00–12.30 Welcome by Else Marie Bukdahl / Dr. phil. + curator
& Joachim Hamou / Visual Artist
12.30–13.30 Presentation by Michael Singer
13.30–15.00 Site inspection
15.00–16.00 Discussion forum

Wednesday 21st of March

12.00–13.00 Refshaleen tour by Anette Skov / artist + guide
13.00–15.00 Production and design workshop by Michael Singer

Thursday 22nd of March

12.00–13.00 Presentations by artists and architects from Refshaleen
13.00–14.00 Lecture by Maria Beyer Skydt / Project Manager at Grontmij A/S
Sustainable urban development from a cross-functional point of view
15.00–16.00 Discussion forum with Michael Singer

Friday 23rd of March

12.00–15.00 Production and design workshop by Michael Singer

Sunday 25th of March

Exhibition of "Work in Progress"
12.30 Speech by Else Marie Bukdahl
13.00 Presentation by Thomas Hartung - *Urban Agriculture*
13.30 Final presentation by Michael Singer + Site inspection

+ Lecture by Michael Singer:

*Regenerative Design For Landscape, Architecture and Infrastructure
Projects In the Public Realm*

Wednesday 21st of March

16.00 Royal Academy of Fine Arts, School of Architecture

Thursday 22nd of March

17.00 University of Copenhagen, Forest & Landscape

++ Performances at Café Teatret every evening by LAND
more info at www.landdrama.org

More details: www.yardgallery.dk



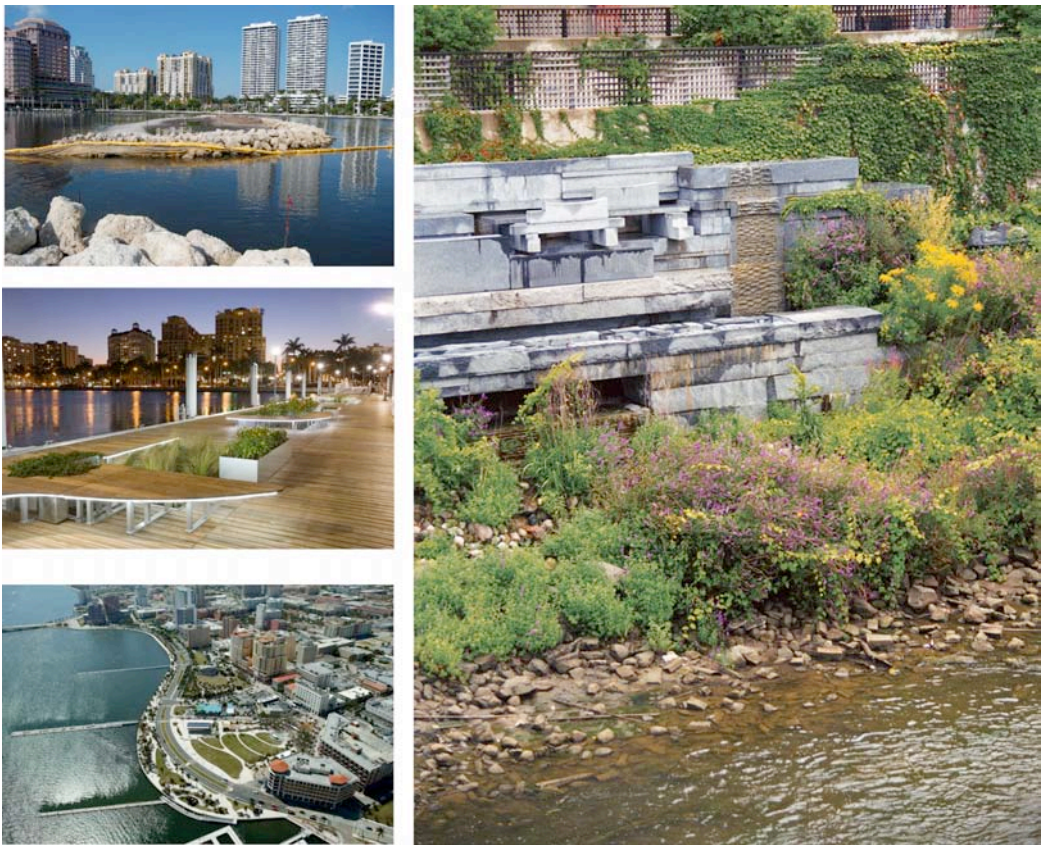
The Edge is located in a post-industrial area that has been one of the largest industrial sites in Denmark. In 1983 the shipyard was closed and to day numerous innovative technologies, artists, musicians, filmmakers and other people from the cultural world are living there.



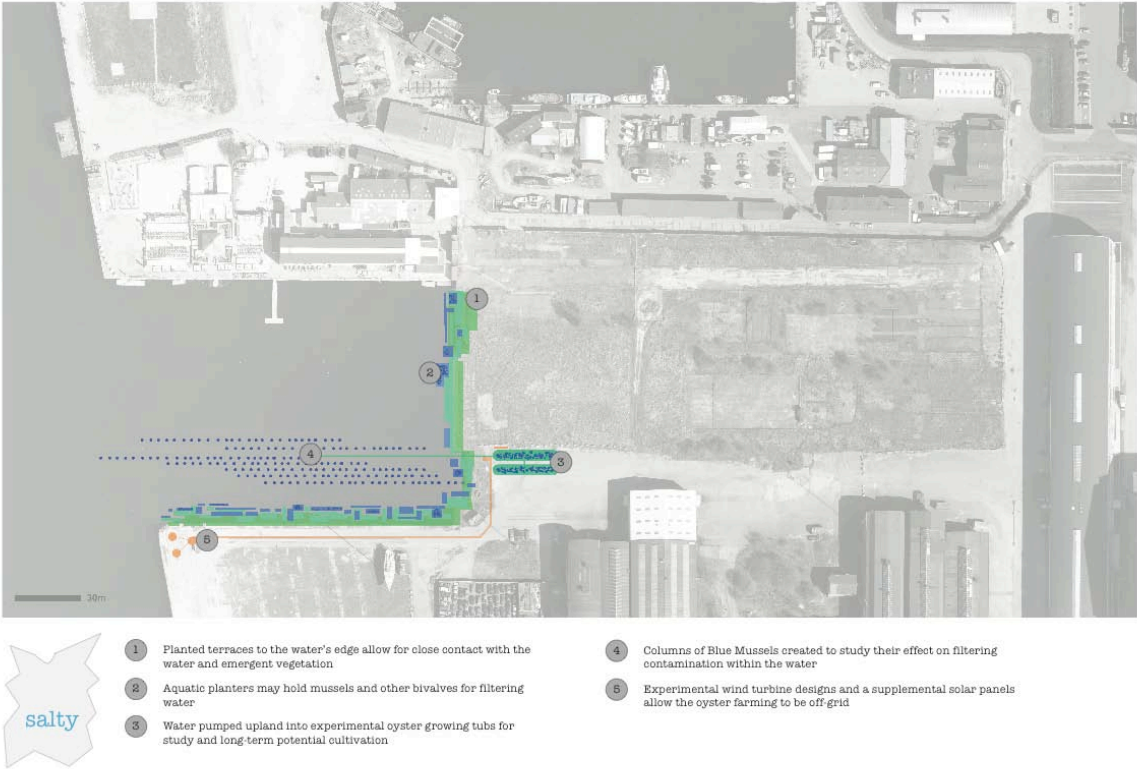
The Edge is where the Refshale Island connects to Copenhagen harbor. The goal of the workshop was to demonstrate the potential interaction between nature, art, architecture, human system, environmental sustainability and functional necessities. The workshop was especially focusing on the relationship between the land, the built areas and the water.



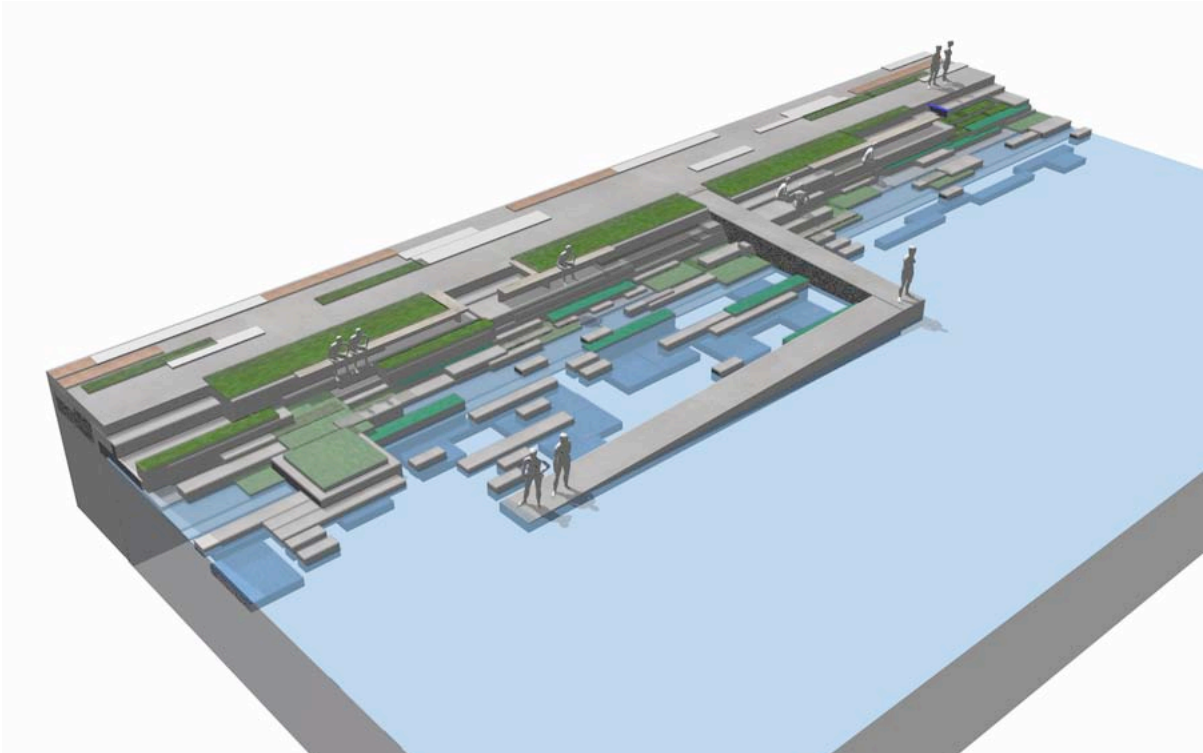
Michael Singer has worked with urban sites and urban planning all over the world and he views the dynamic interactions between the different art forms, disciplines and technologies as a primary place to ask the very important question: How can we live with what sustain us?



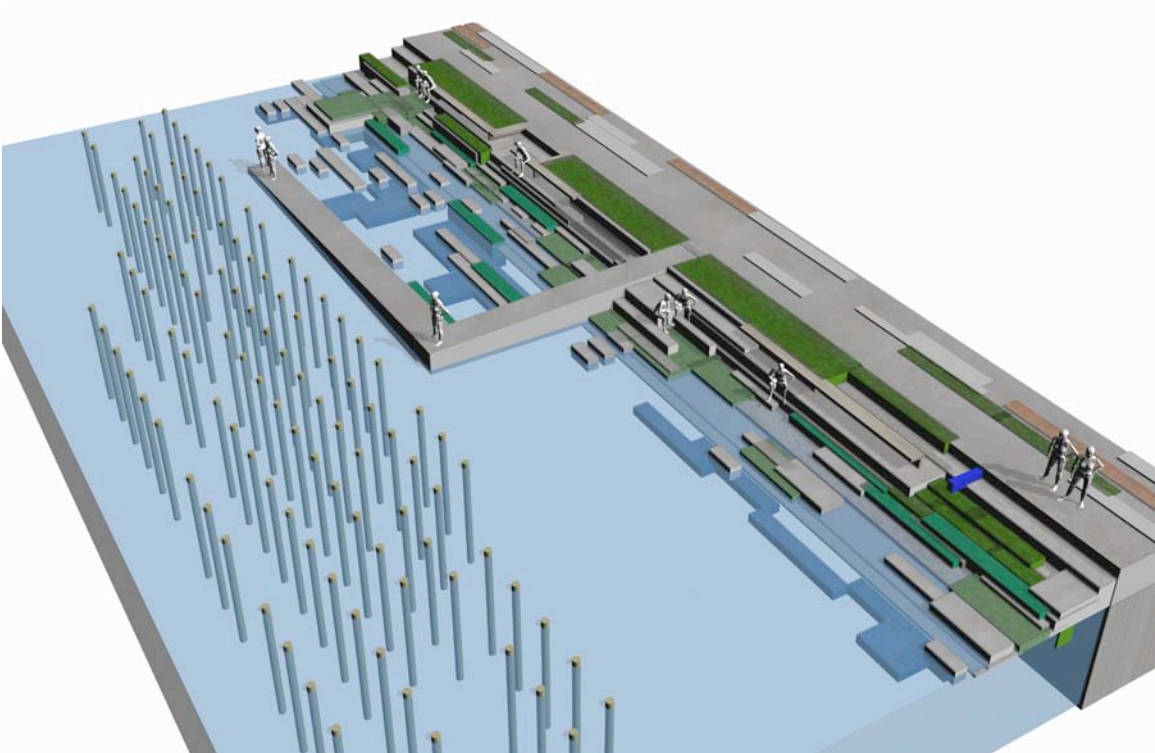
The workshop has succeeded in creating an impressive plan for the waterfront at Refshale Island. This plan, which has so many new perspectives, is an environmental regeneration project that will bring a range of new and surprising improvements to the site. It has revealed many of the unique qualities of the area and communicates new patterns of meaning in the space. It thereby lends the specific site a new identity and transforms it to an inviting place for adults and young people. The plan for *The Edge* also takes into consideration individual and local conditions. It especially interconnects the relationship between nature, urban space, sculpture, ecological design and engineering.



The central element in the project is a sculptural wall connecting land, built environment and water in a new way. The wall is formed as a terrace that overlooks the sea. The different concrete elements shall have a refined woven pattern cut into it. These patterns will look like a secret alphabet. On the wall there will be planted lots of flowers and salt water filtering plants that can give colors and fragrance to the surroundings but most importantly regenerate the now polluted waters and provide access to the public for different kinds of pleasure and swimming.



The sculptural wall also serves to mediate storm water coming from the built area filtering it through the planter systems and the terraces before it can flow into the sea. Oysters and mussels will also be used to clean the water.



D. phil. Else Marie Bukdahl, former rector of the Royal Danish Academy . Member of the supporting group for "*The Edge plan*" which consists of its leader the artist Joachim Hamou, its vice leader, professor Øystein Hjort and Anette Holmberg, leader of Yard-gallery in Refshale Island.